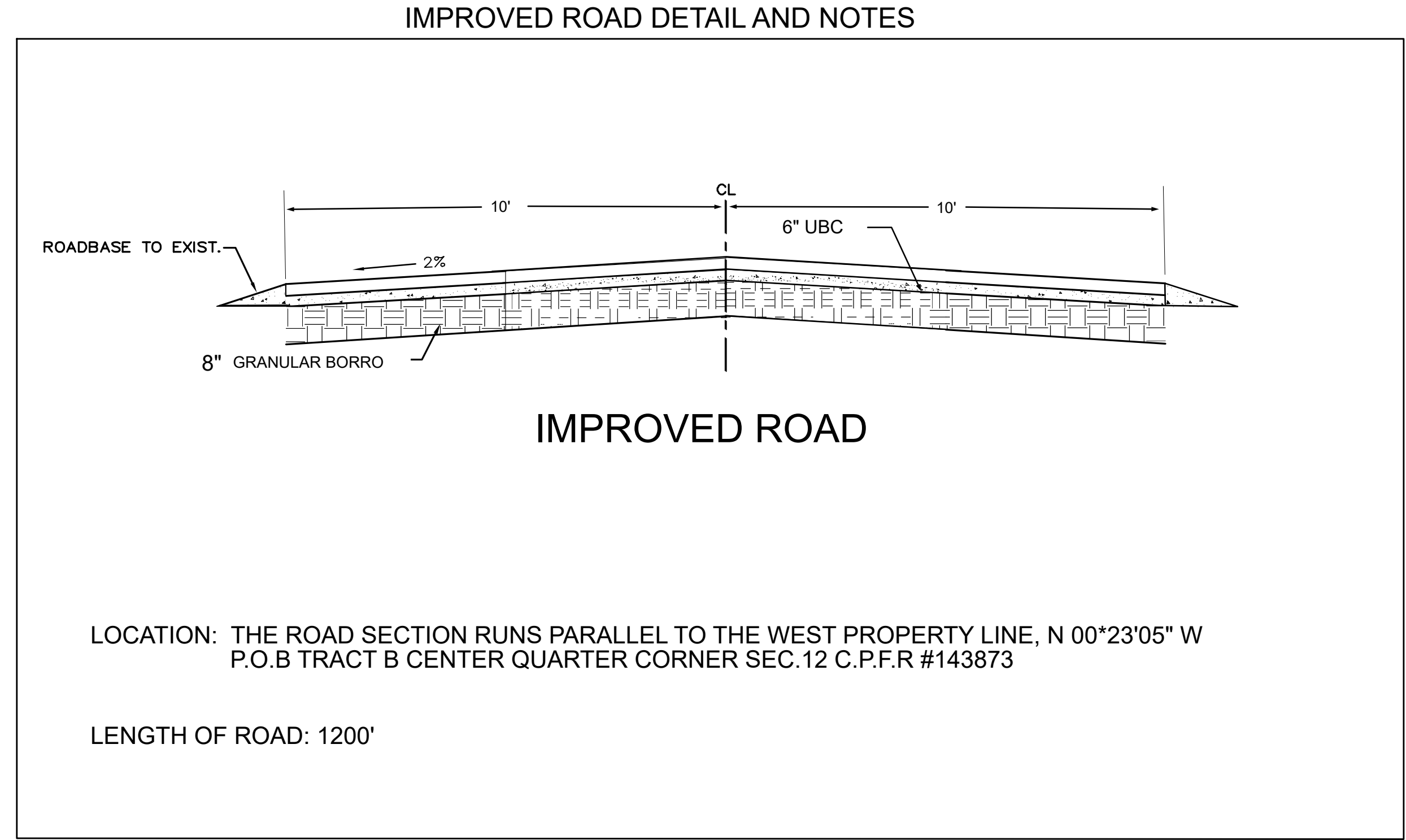
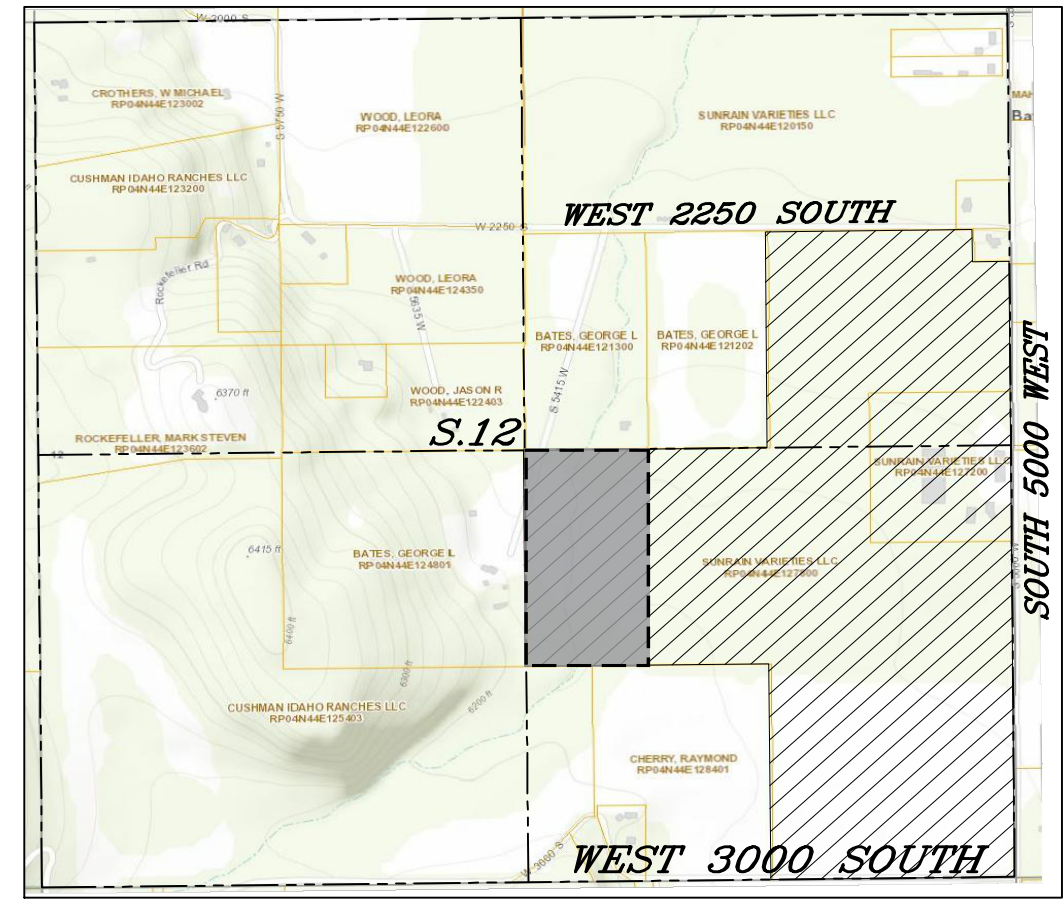
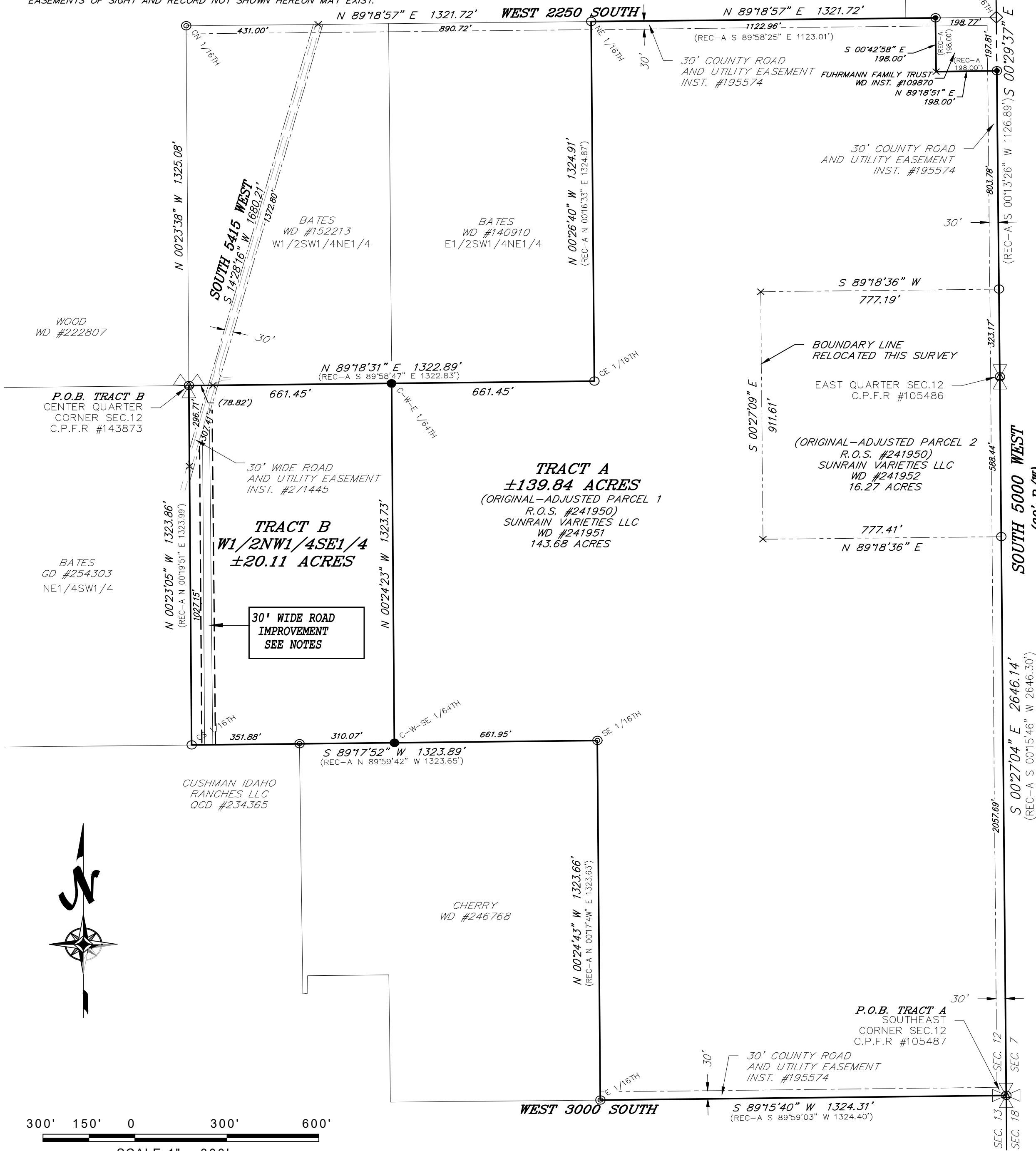


PARCEL 2 OF THAT RECORD OF SURVEY BOUNDARY ADJUSTMENT RECORDED AS INSTRUMENT NUMBER 241950.

THE BASIS OF BEARINGS FOR THIS SURVEY IS REFERENCED TO A DIRECT GPS MEASUREMENT FROM GEODETIC NORTH (USING WGS 84, NAD 83(2011), EPOCH 2010.0000), RESULTING IN A BEARING OF S 002°04' E BETWEEN THE EAST QUARTER CORNER OF SECTION 12 AND THE SOUTHEAST CORNER OF SECTION 12 TOWNSHIP 4 NORTH, RANGE 44 EAST, BOISE MERIDIAN, TETON COUNTY IDAHO, AS SHOWN HEREON.

RECORD INFORMATION AS SHOWN HEREON ARE REFERENCED TO THOSE RECORD OF SURVEYS FILED IN THE OFFICE OF THE CLERK AND RECORDER OF TETON COUNTY AS INSTRUMENT NUMBER(S) (REC-A 241950), (195574), (139521).

EASEMENTS OF SIGHT AND RECORD NOT SHOWN HEREON MAY EXIST.



PROPERTY OWNER TO VERIFY ALL INFORMATION ON THIS DOCUMENT

**RECORD OF SURVEY**  
**BOUNDARYLINE ADJUSTMENT**

Being located within the E1/2 Section 12  
T. 4 N., R. 44 E., BOISE MERIDIAN,  
TETON COUNTY, IDAHO

**ROADWAY IMPROVEMENT LOCATION AND DETAIL**